

Instructions for assembly Onehand brake, U2 light

This brake is only compatible with the U2 Light.

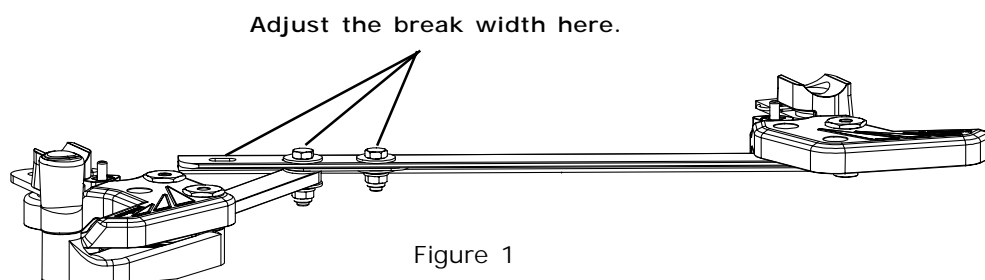
Specification	Art.no	Compatible with:
Onehand brake U2 Light 33, 24" right	367 33 00	Chair width 33
Onehand brake U2 Light 36-39, 24" right	367 36 00	Chair width 36 and 39
Onehand brake U2 Light 33, 24" right	367 42 00	Chair width 42
Onehand brake U2 Light 33, 26" right	367 33 01	Chair width 33
Onehand brake U2 Light 36-39, 26" right	367 36 01	Chair width 36 and 39
Onehand brake U2 Light 33, 26" right	367 42 01	Chair width 42

The brake should be prepared, before being assembled onto the chair, according to the instructions for the specific chair-width the brake is intended for.

The following diagrams and text illustrate the adjustments to be made before use.

Prepare the single-hand brake as follows:

1. Start by checking which chair width the brake is to be used for.
2. Adjust the brake to the correct width. There are two tracks and one hole on the middle rod of the brake for adjusting the width of the brake. **See figure 1.** Loosen the bolts and adjust to the width desired. On the 36-39 brake the innermost hole is for width 36.



Please turn over!

Instructions for assembly Onehand brake, U2 light

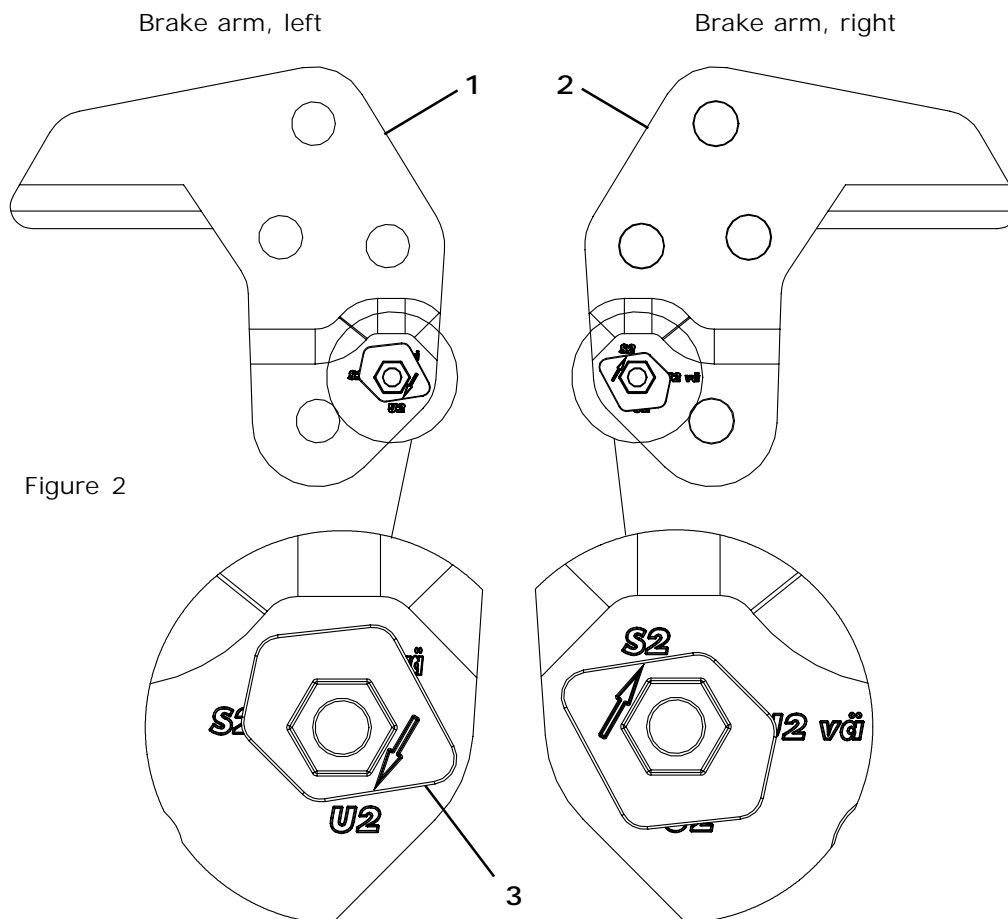
3. There are locking arms on both sides of the brake (1 and 2). See figure 2. There is an end plug (3) attached to the locking arms. The left locking arm (1) has four different instructions stamped onto it (S2, S vä, U2 and 4). The right locking arm (2) has three different instructions stamped onto it (S2, U2 and U2.vä).

4. 1. There is an arrow on the end plug (3). When you adjust the brake for U2 Light the arrow on the end plug should point towards 'U2' on the left side, and 'S2' on the right side.

See figure 2.

(See the last page for assembly of the brake onto the chair).

Adjust the brake for U2 light



Please turn over!

panthera

Panthera Production AB
Gunnebogatan 26, 163 53 Spånga, Sweden
Tel +46 (8) 761 50 40 Fax +46 (8) 621 08 10
panthera@panthera.se www.panthera.se

Instructions for assembly Onehand brake, U2 light

Follow these instructions to assemble the onehand brake on a chair with 24" rear wheels:

1. The brake should be attached to the chassis tubing directly under the seat upholstery.
2. Remove the temporary bolt situated in the spring mounting (1). See figure 3.
3. Attach the brake onto the chassis by screwing the mounting bushing (2) into the bolt (3) situated on the seat tubing of the chair. Drop some Loctite onto the hinges of the mounting bushing (2).
4. Make sure the spring mounting (1) is correctly attached around the tubing. See figure 4.
5. Repeat on both sides.

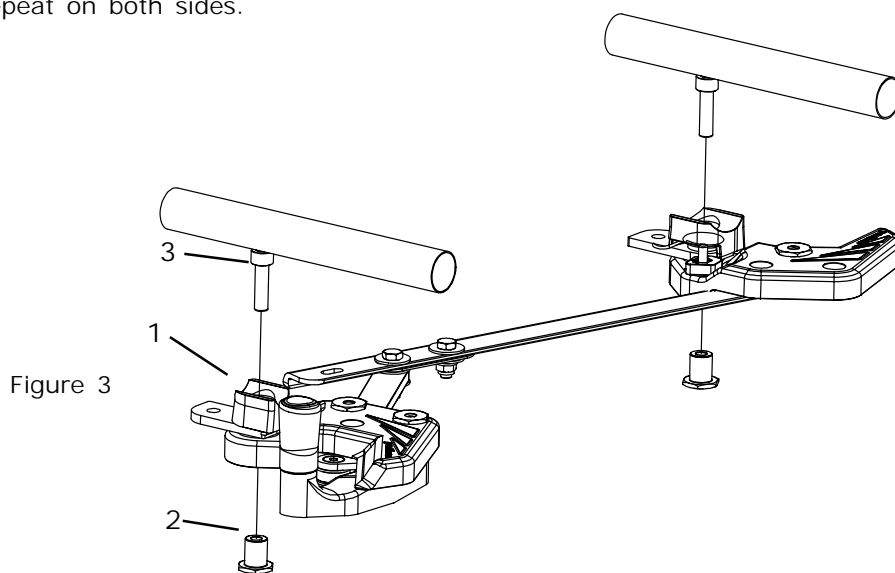


Figure 3

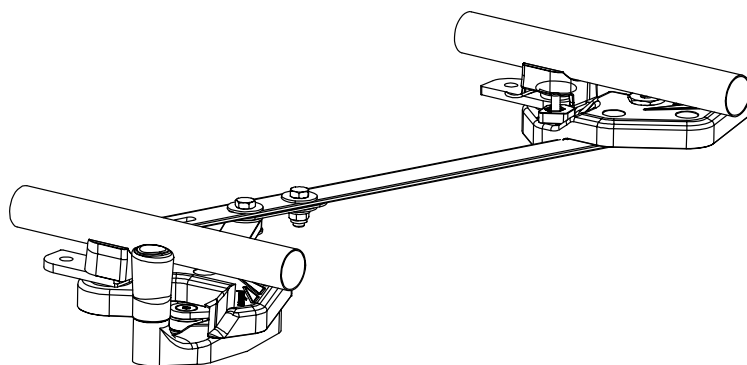


Figure 4

Please turn over!

Instructions for assembly Onehand brake, U2 light

Adjusting the onehand brake on a chair with 26" rear wheels:

1. The brake should be attached to the chassis tubing directly under the seat upholstery.
2. Remove the temporary bolt situated on the spring mounting (1). Make sure the bolt (2) is securely tightened in the second spring mounting. See figure 5.
3. Attach the brake onto the chassis by screwing the mounting bushing (2), the washers (4 and 6), and the distance washer (5) along with the nut (7) into the bolt (3) situated on the seat tubing of the chassis.
4. Make sure that both spring mountings (1) are correctly attached around the tubing. See figure 6.
5. Repeat on both sides.

Figure 5

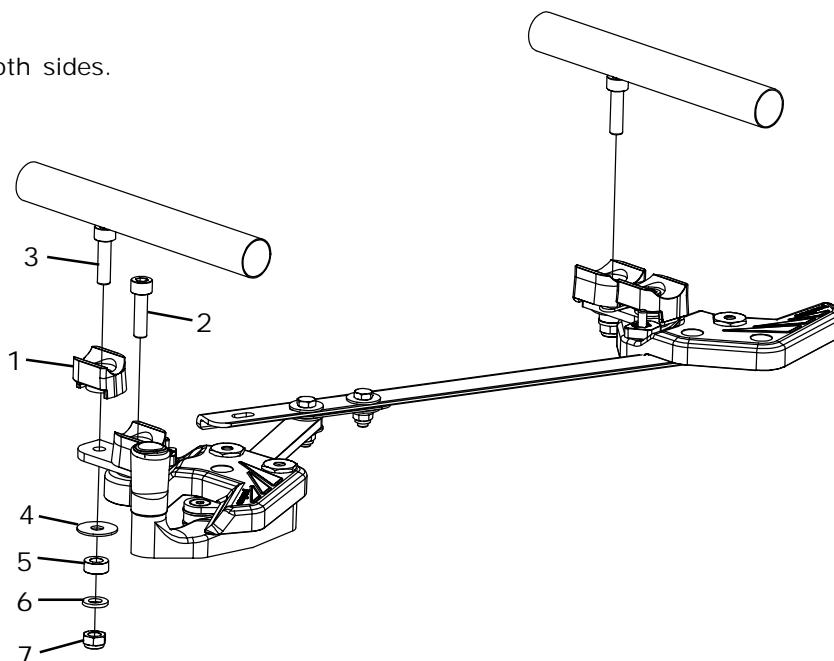


Figure 6

